



**INTERPUMP
HYDRAULICS**

ENGINEERED TO PERFORM



**WET KITS
for TRACTOR**

COMPLETE WET KITS

Discover the superior quality of **IPH WET KITS** for tractor heads, engineered to boost operational efficiency in the hydraulic industry.

These kits seamlessly integrate **COMPACT DESIGN, HIGH PERFORMANCE,** and **LIGHTWEIGHT CONSTRUCTION.**

With a **MODULAR STRUCTURE,** they easily accommodate diverse installation and upgrade requirements, while a wide range of **OPTIONAL FEATURES** ensures full customisation to meet specific needs.

Backed by IPH's extensive expertise as a trusted supplier to the world's leading truck manufacturers, our kits excel in both quality and reliability.

The **"ALL IN ONE BOX" SOLUTION** provides a ready-to-use product that streamlines costs and enhances operational simplicity.

IPH Wet Kit, the perfect choice for your vehicle or fleet.

INTERPUMP HYDRAULICS, part of Interpump Group since 1997, with over 70 years history, is a global partner in the development, production and distribution of reliable hydraulic solutions.

Engineered to perform. Built to last.



WETANKYOU SINCE 1937

, tank specialist since 1937, is part of Interpump Hydraulics: together to be the reference point for the truck industry.



**MAXIMIZED PERFORMANCE
WHEN POWERED UP BY IPH
PTOs AND PAIRED WITH
SERIES 5 FRONT END
CYLINDERS!**



STANDARD CONFIGURATIONS

We have carefully designed standard configurations that differ in:

- ▶ SIDE MOUNTED TIPPING VALVE ON THE OIL TANK
- ▶ TIPPING VALVE UNDERNEATH HOSE SUPPORT PIVOTING BAR
- ▶ TOP MOUNTED TIPPING VALVE ON THE OIL TANK
- ▶ EASYFIT 240 - Pre-assembled solution with compact design
- ▶ TIPPING VALVE ON REAR-MOUNTED TANK
- ▶ HYDROFAN - Powerful oil cooling system with integrated tank

Our bent-axis monodirectional piston pumps and bi-rotational gear pumps complete IPH Wet Kits offer, along with pneumatic controls.

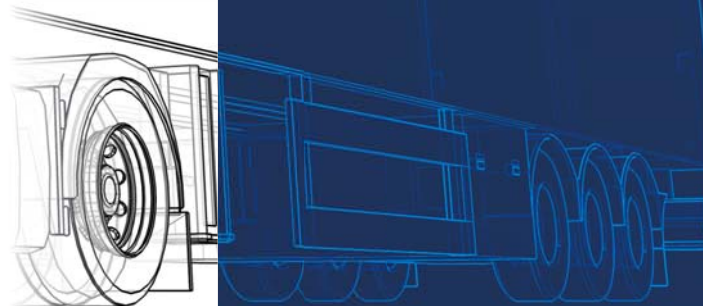
MAIN APPLICATIONS

- ▶ TIPPER SEMI-TRAILER




- ▶ WALKING FLOOR

- ▶ TANK TRUCK



SIDE MOUNTED TIPPING VALVE ON THE OIL TANK

KT1	+ Gear Pump		p. 8
KT2	+ Piston Pump		p. 9

TIPPING VALVE UNDERNEATH HOSE SUPPORT PIVOTING BAR

KT3	+ Gear Pump		p. 10
KT4	+ Piston Pump		p. 11

TOP MOUNTED TIPPING VALVE ON THE OIL TANK

KT5	+ Gear Pump		p. 12
KT6	+ Piston Pump		p. 13

EASYFIT 240

KT7

+ Gear Pump

p. 14

KT8

+ Piston Pump

p. 15



TIPPING VALVE ON REAR-MOUNTED TANK

KT9

+ Gear Pump

p. 16



HYDROFAN

KT10

+ Piston Pump

p. 17



SIDE MOUNTED OIL TANK

Painted steel or aluminium with mounting brackets. Provision for top or side mounted tipping valves.

200 liters standard capacity.

On demand: 150-170-230-250 liters.



REAR CABIN OIL TANK

Painted steel or aluminium complete of mounting brackets.

Low profile return line flange.

Provision for top mount tipping valve.

Dual oil level indicator available.

Volume range from 100 to 200 liters.

DM240 TIPPING VALVE

Single/dual/triple pressure pneumatic operated tipping valve. Anti-tampering pressure setting protection.

Max lowering flow 240 l/min.

Max working pressure 350 bar. Possible assembly position: chassis (in line) - oil tank (side/top) - pivoting bar.

Cable end-stroke function available.



PNEUMATIC CONTROLS

Pneumatic cab control with PTO switching option.

Proportional lowering, compact design, console available on demand.



BLH GEAR PUMP

Bi-rotational 4-bolt gear pump, ISO 14 (DIN 5462) shaft, for tipper. Displacement up to 125 cc rev. - max intermittent operating pressure up to 250 bar.



FOX BENT-AXIS PISTON PUMP

High pressure capability. Mounting options cover SAE and ISO flanges. Reduced noise. Bypass option available (for engine mounted applications). Max pressure up to 450 bar (according to displacement). Max displacement 130 cc. Seven models available.

ALL-IN-ONE COMPLETE WET KIT - EASYFIT 240

- Integrated tipping system with provision for multifunction applications.
- Pre-assembled solution.
- Compact design.
- Leakage proof: the filler plug is housed in protected position to prevent contamination.
- Continuous oil level control.
- High pressure water jet protection cover.
- Easier service and maintenance.
- Reduced mounting time.
- In-cab data transfer available.
- Options available for Customisation.



HYDRAULIC CONTROL UNIT - HYDROFAN

- Available in 3 power sizes: 7 - 13 - 20 kW.
- Oil flow rate: 40 - 130 L/min.
- Max. operating pressure: 315 bar.
- Heat dissipation up to 20 kW at 40°C.
- Can be supplied with painted steel or stainless steel casing, and plastic or stainless steel cover.

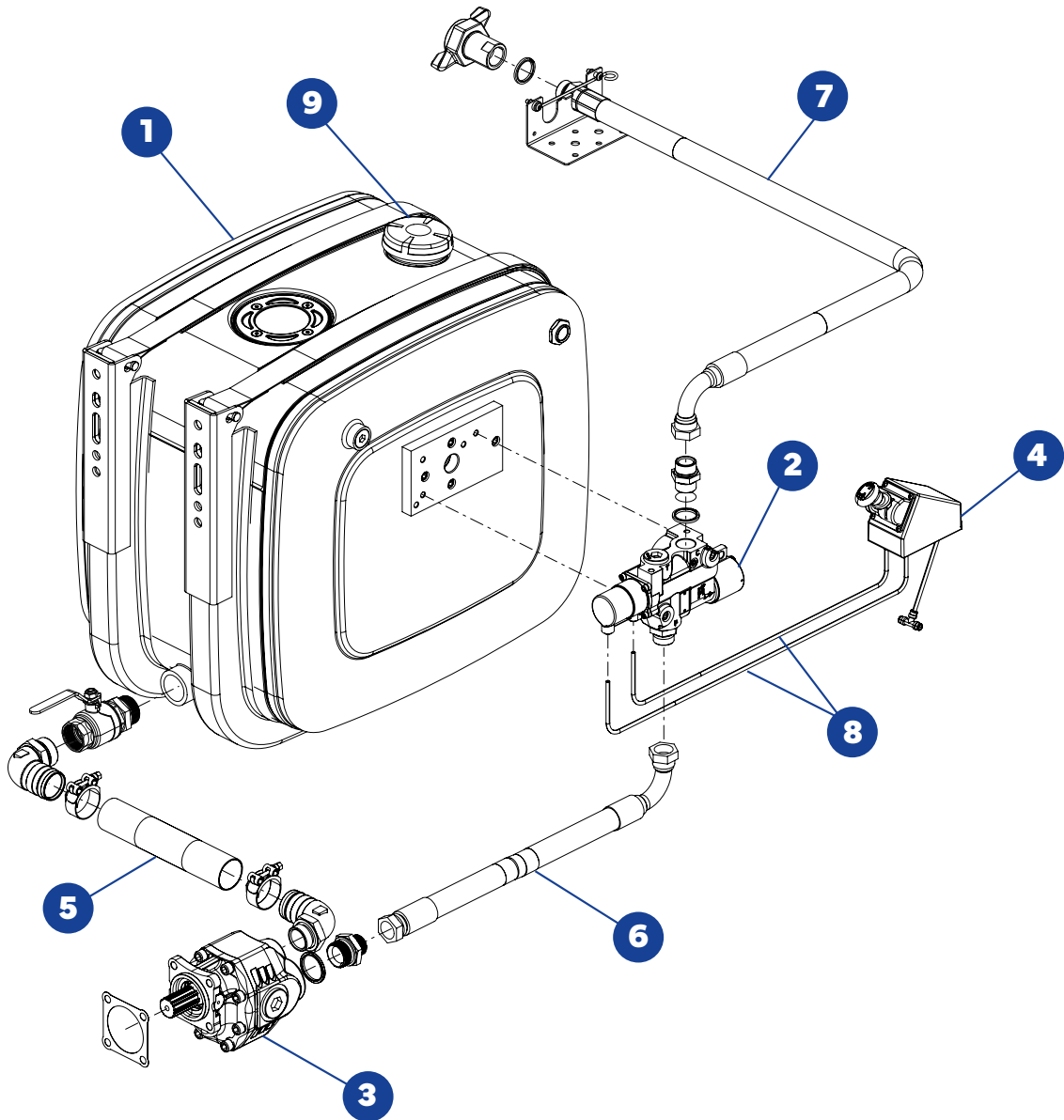


SIDE MOUNTED TIPPING VALVE ON THE OIL TANK

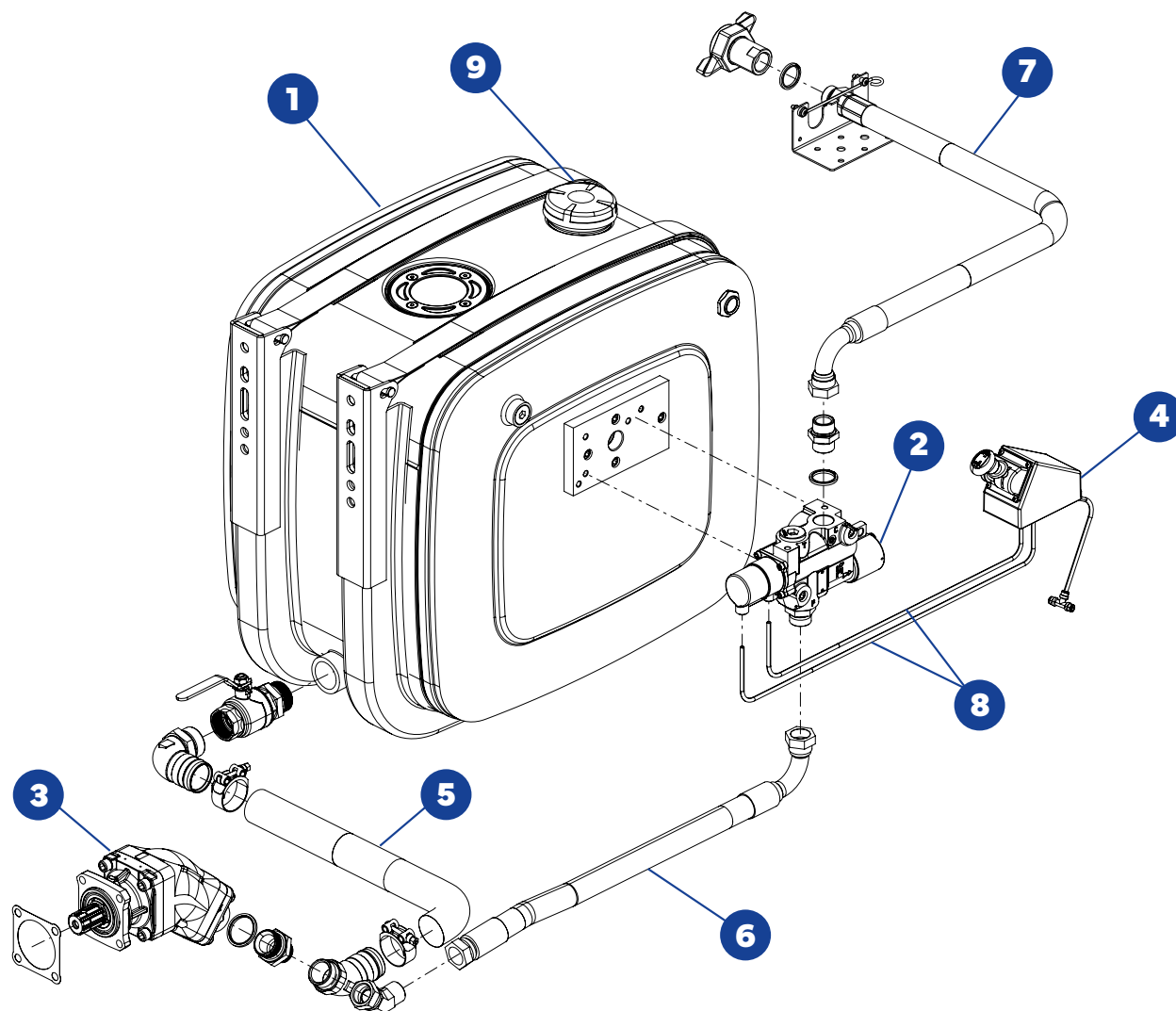
WET KIT
SCHEME

+ GEAR PUMP

KTT



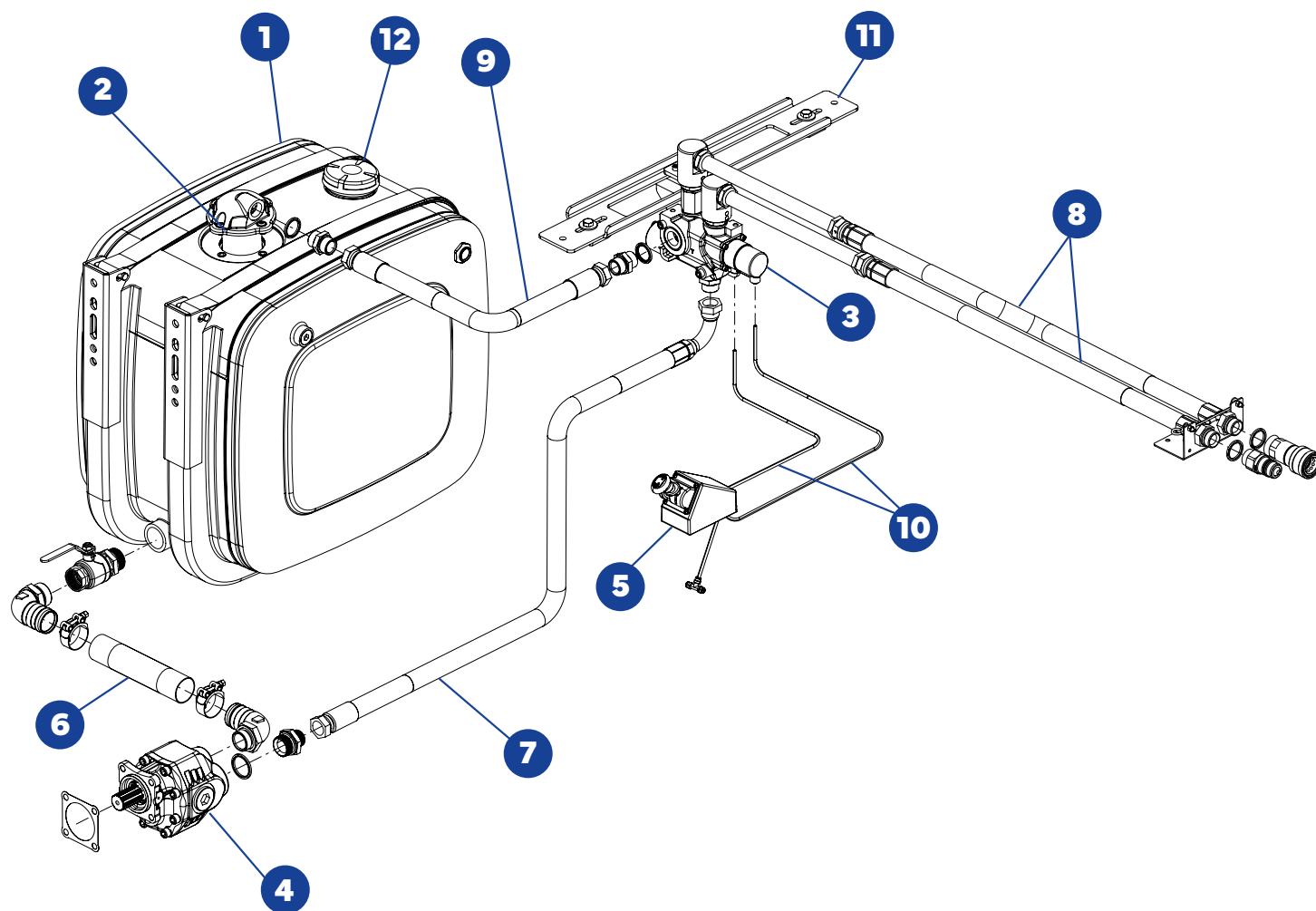
Pos.	Description
1	Oil tank - side mounted - 200 liters
2	Hydraulic distributor DM240 - 190 bar
3	Gear pump BLH, 105 cc displacement, bi-rotational, 4 holes
4	Pneumatic control with PTO switching option
5	Hose R4 Ø51mm L=2000mm (suction line)
6	Hose TTRK250 G1" FD-F90 L=1500mm (pressure line)
7	Hose TTRK250 G1" F90-MD L=3500mm (pressure line)
8	Rilsan hose 6x4, L=25m
9	Air filter



Pos.	Description
1	Oil tank - side mounted - 200 liters
2	Hydraulic distributor DM240 - 190 bar
3	Piston pump FOX, 108 cc displacement, bent-axis
4	Pneumatic control with PTO switching option
5	Hose R4 Ø51mm L=2000mm (suction line)
6	Hose TTRK250 G1" FD-F90 L=1500mm (pressure line)
7	Hose TTRK250 G1" F90-MD L=3500mm (pressure line)
8	Rilsan hose 6x4, L=25m
9	Air filter

+ GEAR PUMP

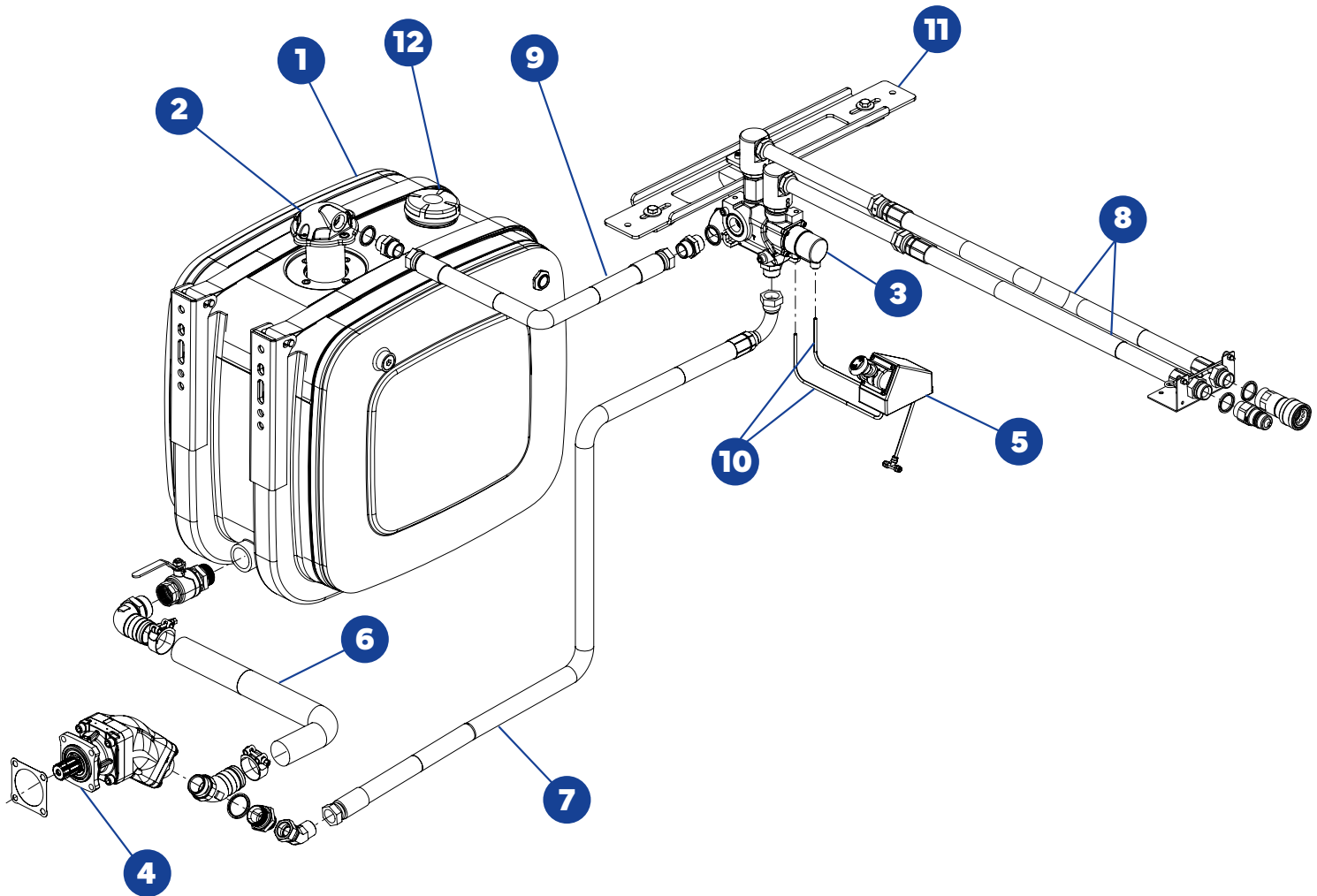
KT3



Pos.	Description
1	Oil tank - side mounted - 200 liters
2	Return filter
3	Hydraulic distributor DM240 - 170/250 bar
4	Gear pump BLH, 105 cc displacement, bi-rotational, 4 holes
5	Pneumatic control with PTO switching option
6	Hose R4 Ø51mm L=2000mm (suction line)
7	Hose TTRK250 G1" FD-F90 L=1500mm (pressure line)
8	Hose TTRK250 G1" FD-MD L=1700mm (pressure line)
9	Hose TTRK250 G1" FD-FD L=1200mm (return line)
10	Rilsan hose 6x4, L=25m
11	Hoses support pivoting bar
12	Air filter

KT4

+ PISTON PUMP



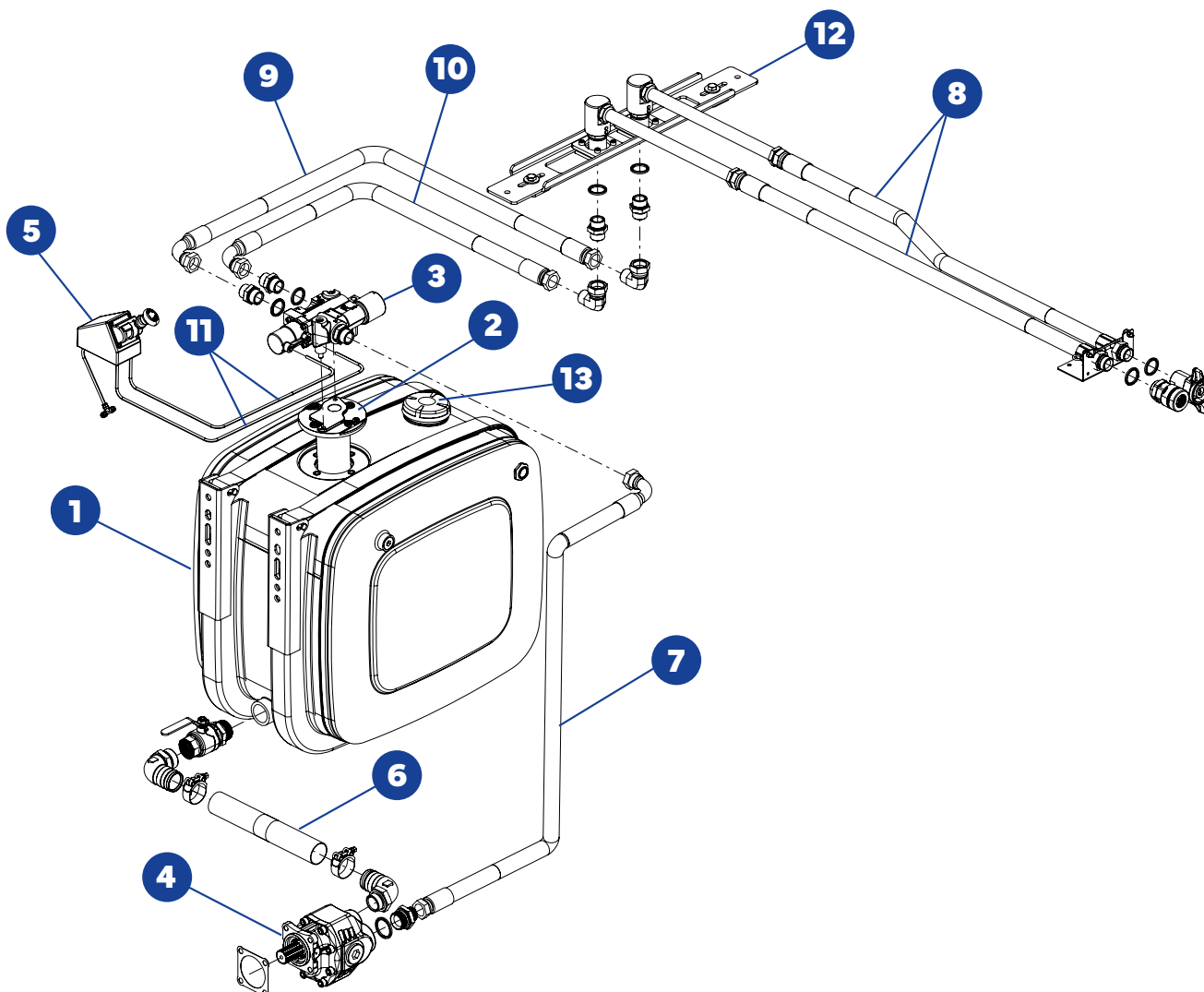
Pos.	Description
1	Oil tank - side mounted - 200 liters
2	Return filter
3	Hydraulic distributor DM240 - 170/250 bar
4	Piston pump FOX, 108 cc displacement, bent-axis
5	Pneumatic control with PTO switching option
6	Hose R4 Ø51mm L=2000mm
7	Hose TTRK250 G1" FD-F90 L=1500mm (pressure line)
8	Hose TTRK250 G1" FD-MD L=1700mm (pressure line)
9	Hose TTRK250 G1" FD-FD L=1200mm (return line)
10	Rilsan hose 6x4, L=25m
11	Hoses support pivoting bar
12	Air filter

TOP MOUNTED TIPPING VALVE ON THE OIL TANK

WET KIT
SCHEME

+ GEAR PUMP

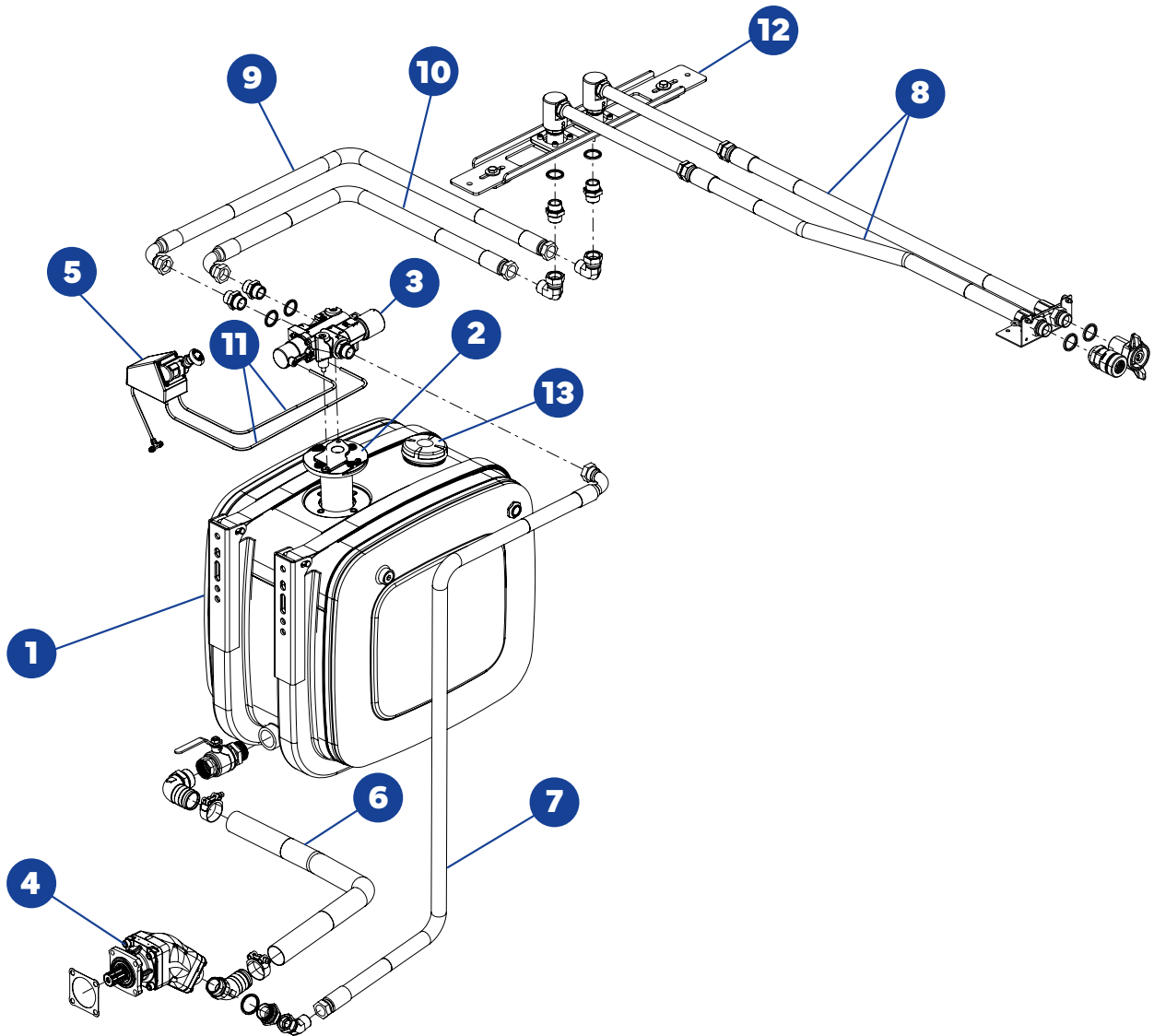
KT5



Pos.	Description
1	Oil tank - side mounted - 200 liters
2	Return filter
3	Hydraulic distributor DM240 - 170/250 bar
4	Gear pump BLH, 105 cc displacement, bi-rotational, 4 holes
5	Pneumatic control with PTO switching option
6	Hose R4 Ø51mm L=2000mm (suction line)
7	Hose TTRK250 G1" FD-F90 L=1500mm (pressure line)
8	Hose TTRK250 G1" FD-MD L=1700mm (pressure line)
9	Hose TTRK250 G1" FD-F90 L=1200mm (return line)
10	Hose TTRK250 G1" FD-F90 L=1200mm (pressure line)
11	Rilsan hose 6x4, L=25m
12	Hoses support pivoting bar
13	Air filter

KT6

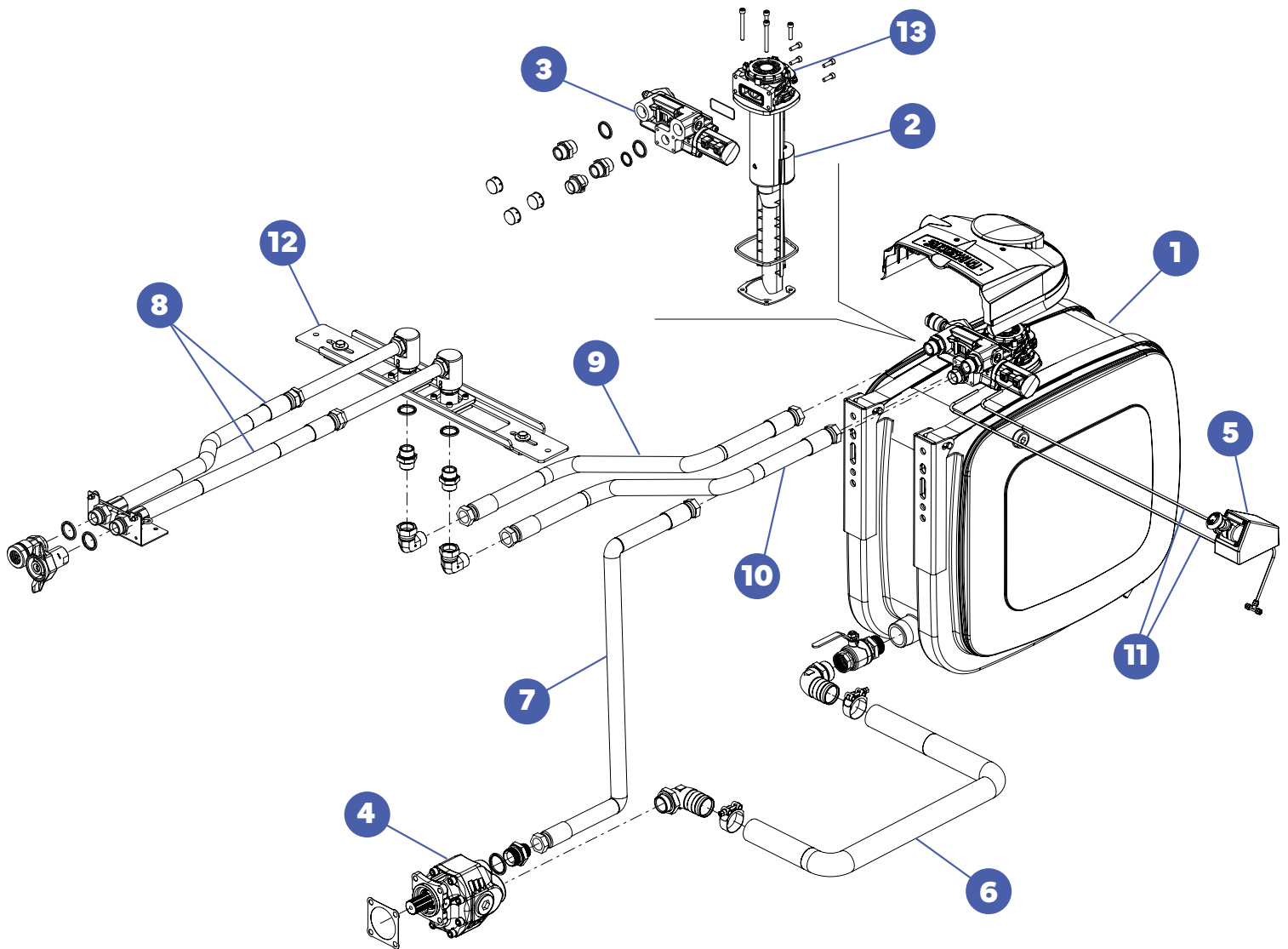
+ PISTON PUMP



Pos.	Description
1	Oil tank - side mounted - 200 liters
2	Return filter
3	Hydraulic distributor DM240 - 170/250 bar
4	Piston pump FOX, 108 cc displacement, bent-axis
5	Pneumatic control with PTO switching option
6	Hose R4 Ø51mm L=2000mm (suction line)
7	Hose TTRK250 G1" FD-F90 L=1500mm (pressure line)
8	Hose TTRK250 G1" FD-MD L=1700mm (pressure line)
9	Hose TTRK250 G1" FD-F90 L=1200mm (return line)
10	Hose TTRK250 G1" FD-F90 L=1200mm (pressure line)
11	Rilsan hose 6x4, L=25m
12	Hoses support pivoting bar
13	Air filter

+ GEAR PUMP

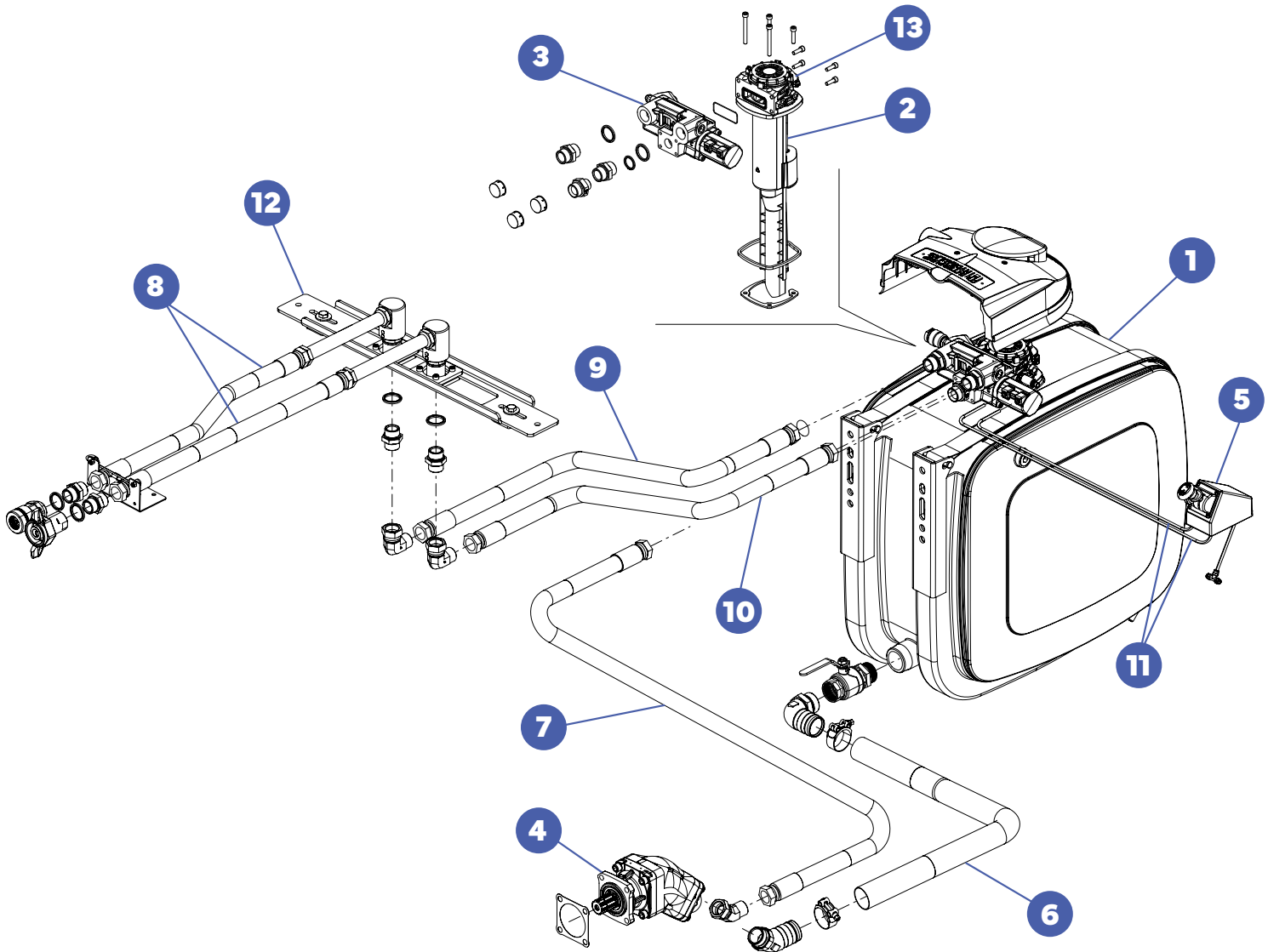
KT7



Pos.	Description
1	Oil tank - side mounted - 200 liters
2	Return filter
3	Hydraulic distributor EF240/D - 170/250 bar
4	Gear pump BLH, 105 cc displacement, bi-rotational, 4 holes
5	Pneumatic control with PTO switching option
6	Hose R4 Ø51mm L=2000mm (suction line)
7	Hose TTRK250 G1" FD-FD L=1500mm (pressure line)
8	Hose TTRK250 G1" FD-MD L=1700mm (pressure line)
9	Hose TTRK250 G1" FD-F90 L=1200mm (return line)
10	Hose TTRK250 G1" FD-F90 L=1200mm (pressure line)
11	Rilsan hose 6x4, L=25m
12	Hoses support pivoting bar
13	Air filter

KT8

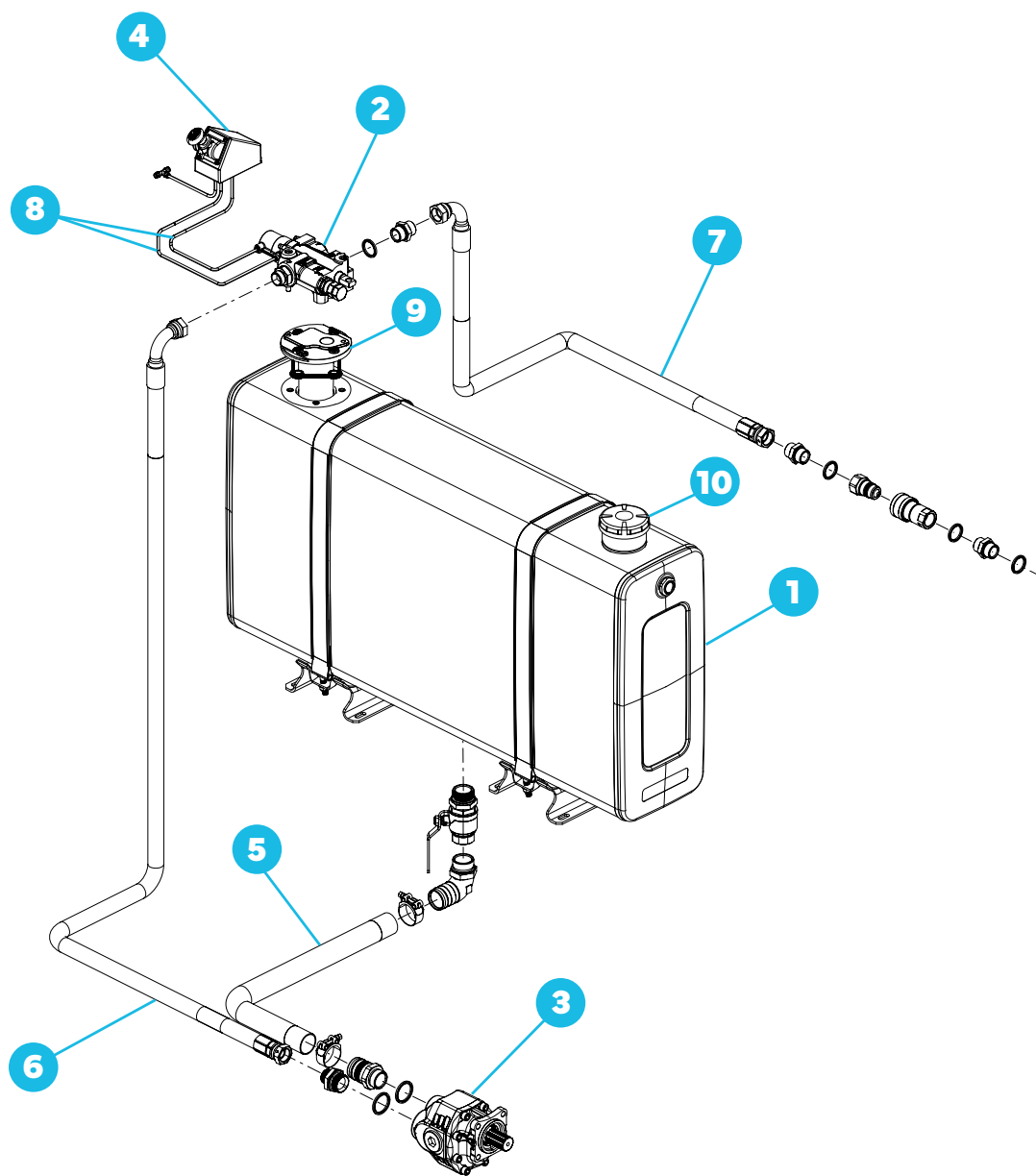
+ PISTON PUMP



Pos.	Description
1	Oil tank - side mounted - 200 liters
2	Return filter
3	Hydraulic distributor EF240/D - 170/250 bar
4	Piston pump FOX, 108 cc displacement, bent-axis
5	Pneumatic control with PTO switching option
6	Hose R4 Ø51mm L=2000mm (suction line)
7	Hose TTRK250 G1" FD-FD L=1500mm (pressure line)
8	Hose TTRK250 G1" FD-MD L=1700mm (pressure line)
9	Hose TTRK250 G1" FD-F90 L=1200mm (return line)
10	Hose TTRK250 G1" FD-F90 L=1200mm (pressure line)
11	Rilsan hose 6x4, L=25m
12	Hoses support pivoting bar
13	Air filter

+ GEAR PUMP

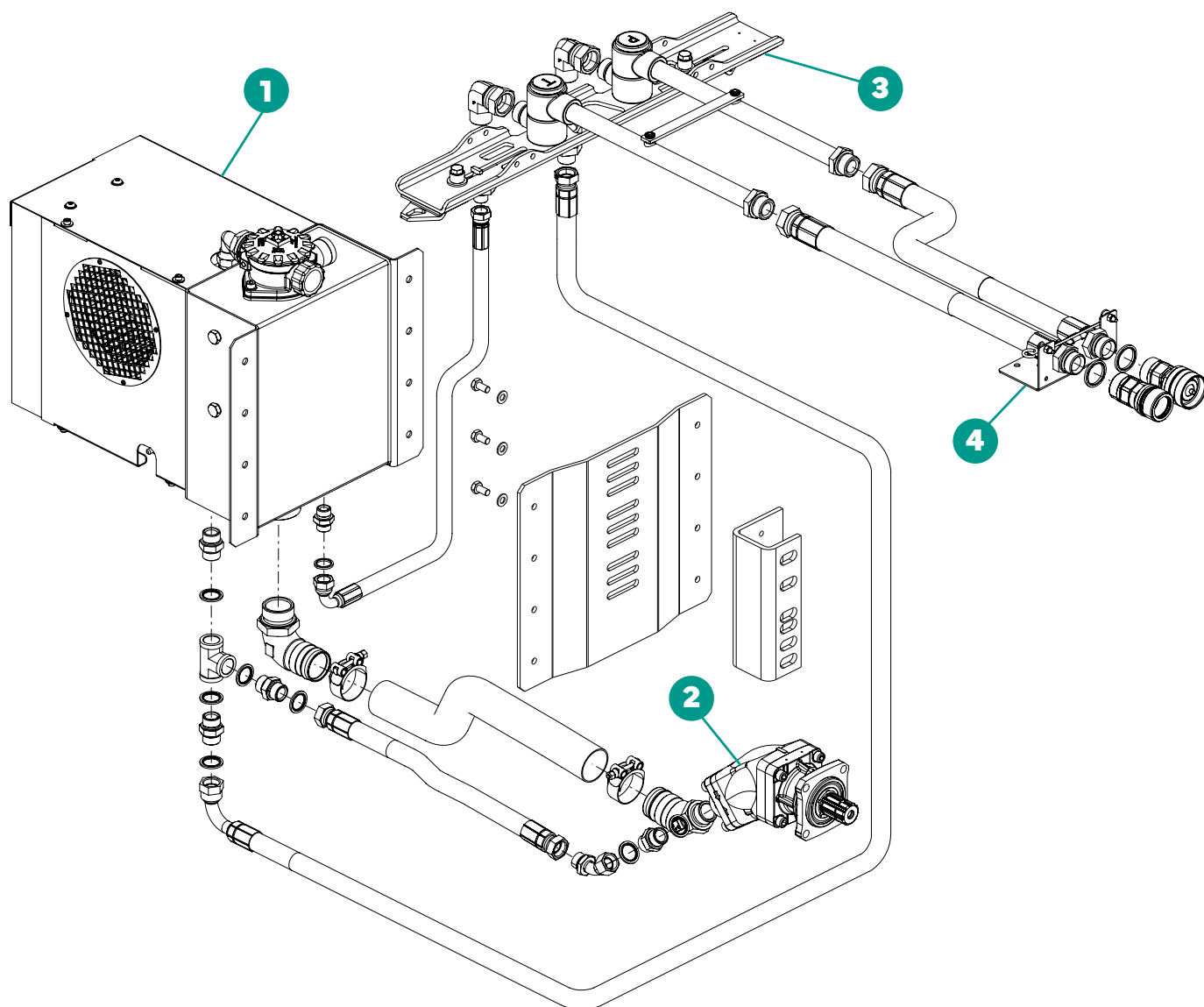
KT9



Pos.	Description
1	Oil tank - rear mounted 200 liters
2	Hydraulic distributor, DM240, max. 200 bar
3	Gear pump, 90 cc displacement, bi-rotational, 4 holes
4	Pneumatic control with PTO switching option
5	Hose R4 Ø51mm L=2000mm (suction line)
6	Hose TTRK250 G1" FD-F90 L=2500mm (pressure line)
7	Hose TTRK250 G1" FD-F90 L=4000mm (pressure line)
8	Rilsan hose 6x4, L=25m
9	Oil filter
10	Air filter

KT10

+ PISTON PUMP



Pos.	Description
1	HydroFan 13 kW
2	Piston pump FOX, 64 cc displacement, bent-axis
3	Hoses support pivoting bar
4	Pipe clamping collar

Hoses support pivoting bars



Version for reduced height:
designed for connecting lines
from rear - 1 or 2 hoses



**Version for side board
& tail gate distributor**
- 2 or 4 hoses

**Tipper Manager · Basic CAN BUS
Safety Tipping System**



- Side angle monitoring
- Visual & Acoustic Alarm
- Tip Lock Out above side angle limit
- Programmable angle limit (factory set 4°) with password
- Easy to install.

Quick Couplings

Steel ball and screw quick couplings.



Truck App Remote control system, in-cab monitoring system and digital sensors are available for our Integrated tipping system with provision for multifunction application: **EasyFit 240**.

Truck App Remote Control System

The innovative **IPH Truck App** is designed to connect the smartphone to the truck and manage your equipment from outside the cabin.

- Highly configurable functions and Sensors interfaces
- Improved safety control
- IPH Truck App is available for all devices, visit iph.it for more information.



EasyFit Auxiliary Section for side board and tail gate control

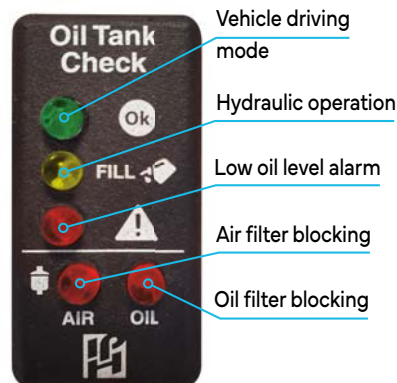
Pneumatically controlled 4-way distributor, for operating a double acting cylinder, supplied with or without stop valves.

- Central position with pump supplied to next distributor
- Flow regulator at "P" inlet
- Pressure and flow adjustment independent for auxiliary section
- Ready for auxiliary drainage G1" with drainage through filter
- Flange connection to EF240/D distributor.



In-cab Monitoring System & Digital Sensors

On demand, digital sensor integration for a better in-cab system monitoring during operation, as for example air/oil filters clogging and oil tank level (protection against pump cavitation).



HEADQUARTERS

INTERPUMP HYDRAULICS S.p.A.

Via dell'Artigiano, 9
40010 Sala Bolognese (BO) - Italy
Ph: +39 051 6460511

 info@iph.it

 iph.it

A member of



Part of 

Via Risorgive, 20
31048 Olmi di S. Biagio di Callalta (TV) - Italy
Ph: +39 0422 362172

 info@padoan.it

 padoan.it

WORLDWIDE NETWORK

Australia

Newcastle
Australia Wide: Ph: 1300 30 30 10
Overseas Callers: Ph: +61 2 4960 1888
info@megapacific.com.au
www.megapacific.com.au

Brazil

Caxias do Sul / RS
Ph: +55 054 3289 7000
interpump@interpump.com.br
www.interpump.com.br

Chile

Santiago de Chile
Ph: +56 2 29633870
contacto@hydrocar.cl
www.hydrocar.cl

China

Wuxi
Ph: +86 0510 85360595
xs@interpump.net.cn
www.iph.net.cn

France

Paris
Ph: +33 (0)1.60.62.56.56
commercial@iphfrance.fr
www.iph.it

Germany

Meinerzhagen
Ph: +49 2354 70885-0
info@ifs-germany.de
www.interpumpfluidsolutions.com/de/

India

Hosur
Ph: +91 7397 734 701
info@interpumphydraulicsindia.com
www.iphindia.co.in

New Zealand

Mount Maunganui
Ph: +64 7 928 7722
sales@megapacific.co.nz
www.megapacific.co.nz

Peru

Lima
Ph: +511 3434231
contacto@iph.pe
www.hydrocar.pe

Russia

Moscow
Ph: +7 495 7804083
info@iph-rus.ru
www.iph-rus.ru

South Africa

Johannesburg
Ph: +27 011 824 5494
sales@interpumpsouthafrica.co.za
www.interpumpsouthafrica.co.za

UK

Kidderminster DY10 2RN
Ph: +44 01384 292861
hydraulics@interpumpfluidsolutions.co.uk
www.interpumpfluidsolutions.com/uk

USA

Muncie
Ph: +1 765-284-7721
www.munciepower.com/contact
www.munciepower.com

Germany

Mönchengladbach
Ph: +49 (0) 2161 82122-0
kontakt@padoan-deutschland.de
www.padoan-gmbh.de

Switzerland

San Vittore - Grisons
Ph: +41 (0) 91 2228877
info@padoanswiss.ch
www.padoanswiss.ch